



# COGENCE Alliance

Owners + Architects + Engineers + Contractors

*Inspire. Educate. Unite.*



# Mission + Purpose

---

**Cogence** *(Latin)*

**“To drive together” or “Thinking that is well organized”**

---

The purpose of the Alliance is to bring Owners and Developers, Architects and Engineers, Construction Managers and Contractors, and Allied Industry Professionals together to **advocate** and be a **resource** for improved project delivery.

For more information visit us at [www.cogence.org](http://www.cogence.org)

*Inspire. Educate. Unite.*



# Cogence Partner Core Values

---

Each partner is committed to:



- **Understanding** diverse backgrounds, experiences, and beliefs
- **Exchanging** ideas through conversation and debate
- Being responsible for **positive outcomes** over time, with a lifelong passion to learn, grow, and stay curious – while having **fun**!

## Partner Benefits: (why nominate?)

- Expand the COGENCE mindset within your firm.
- Develop future leaders within firm.
- Develop a future COGENCE Primary Partner.

## Emerging Leader Benefits:

- Improve the industry as you advance your career.
- Opportunity to be involved with COGENCE Committees.
- Mentorship from others in the industry.
- Expand their network with other leaders throughout the industry.

**Application period will  
be opening January 1 –  
March 1, 2026**

## Questions:

Doug Smith      [douglas.r.smith@imegcorp.com](mailto:douglas.r.smith@imegcorp.com), 614-940-4193

Kevin Thompson   [kthompson@cogence.org](mailto:kthompson@cogence.org), (614) 370-1713





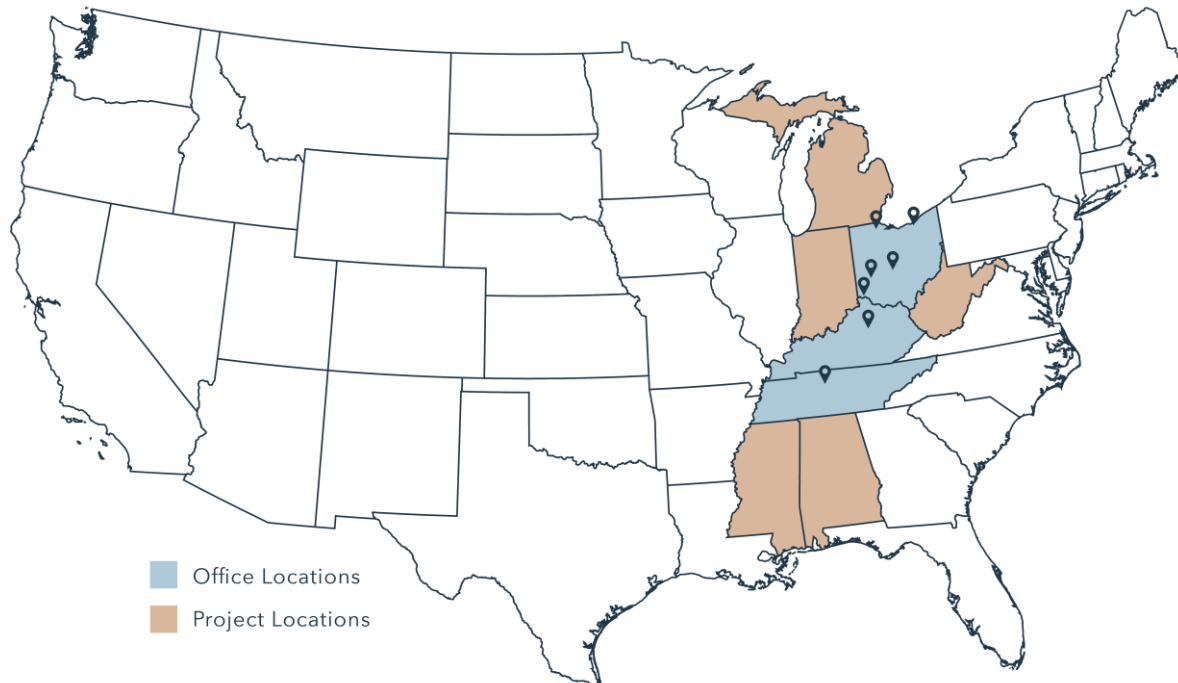
# The New Realities for Construction Trade Contractors and Supplier

*Inspire. Educate. Unite.*



# ALL THE EXPERIENCE, PLUS ALL THE VISION

Valley Interior Systems was founded in Cincinnati, Ohio in 1981 as a commercial union subcontracting firm. At the time, we specialized in drywall, framing, acoustical ceilings and plastering services throughout the Greater Cincinnati region. Today, we have completed more than \$2 billion in projects. We manage the largest skilled labor workforce in the region and have a growing offering of interior and exterior construction services.



**40+**  
YEARS

**7**  
REGIONAL OFFICES

**750+**  
HAPPY CLIENTS

**8000+**  
PROJECTS COMPLETED

**1500**  
VALLEY FAMILY MEMBERS

*AND STILL BUILDING*





# INTERIOR CONSTRUCTION

## Gypsum Board Assemblies

- Interior Metal Framing
- Gypsum Board
- Radiation Protection
- Acoustic Insulation
- Drywall Finishing
- Joint Protection/Firestopping

## Plaster Fabrications

- Cement Plastering
- Decorative Plaster Shapes
- Plaster Restoration
- Column Covers

## Acoustic Ceilings

- Ceiling Grid and Tile
- Clean Room Ceilings
- Specialty Ceilings
- Security Ceilings

## Sound Control

- Acoustic Room Components
- Wall and Ceiling Panels
- Stretch Fabric Systems

## Division 10

- Toilet Compartments
- Toilet Accessories
- Wall and Door Protection
- Fire Extinguishers

## Openings

- Hollow Metal Doors and Frames
- Wood Doors
- Door Hardware







# EXTERIOR CONSTRUCTION

## Exterior Framing

- Cold-Formed Framing
- Cold-Formed Metal Trusses

## Sheathing

- Gypsum Sheathing
- Polyiso Sheathing
- Insulated Nailable

## Sheathing Thermal Barriers

- Blanket Insulation
- Spray Insulation
- Rigid Insulation

## Exterior Insulation and Finish Systems

- EIFS
- Direct Applied

## Air/Weather Barriers

- Plastic Sheeting
- Spray Applied
- Self-Adhered

## Cladding

- ACM Panels
- Fiber Cement Siding
- Formed Metal Wall Panels
- Insulated Metal Panels
- Terra Cotta





# Jones Schlater Flooring

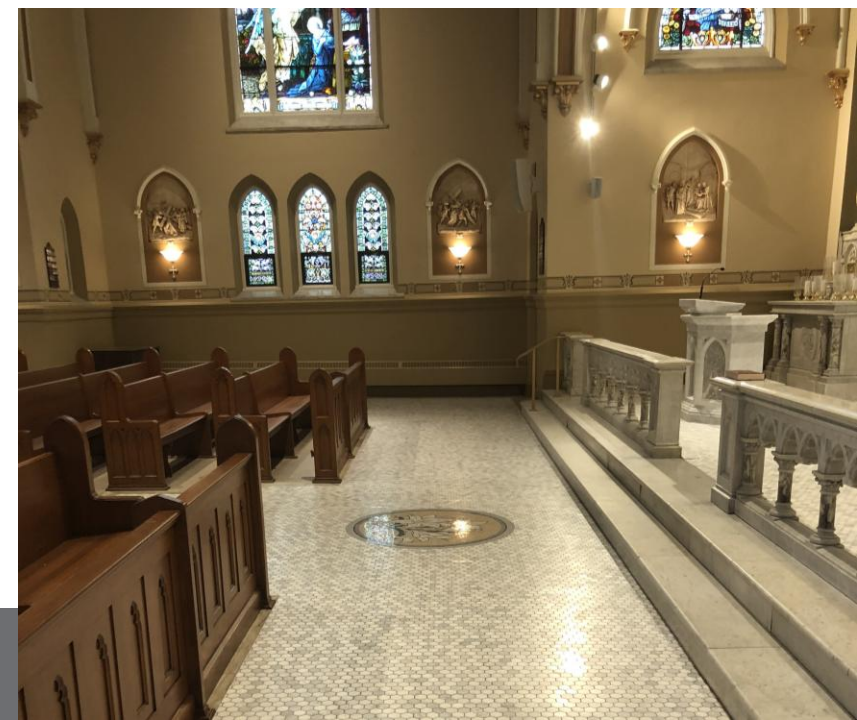


*Inspire. Educate. Unite.*

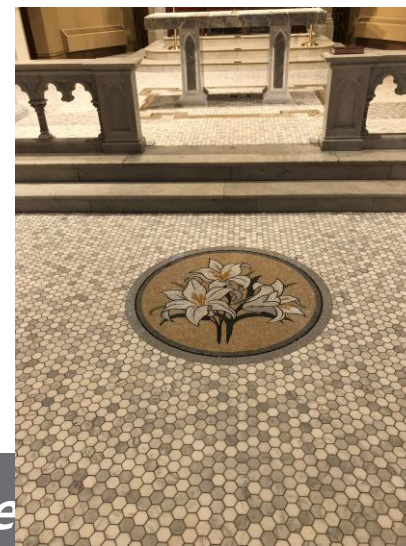
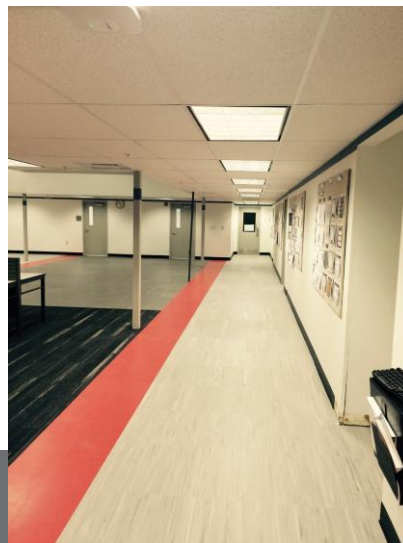
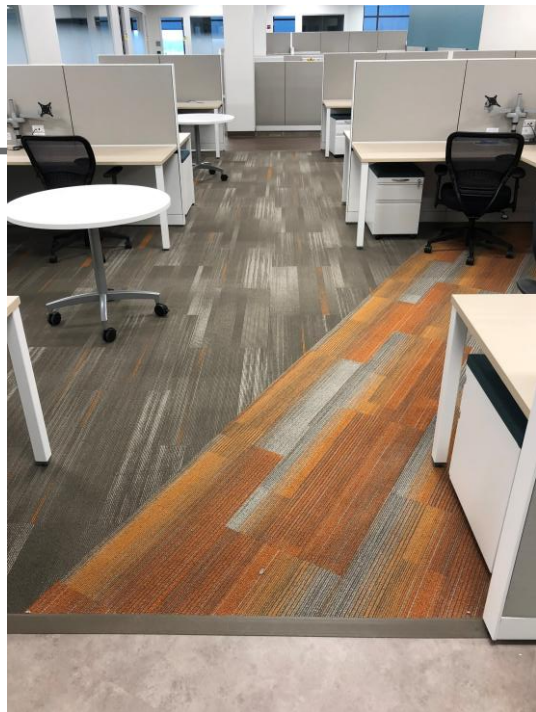
















# Recruitment / Incentives / Technology

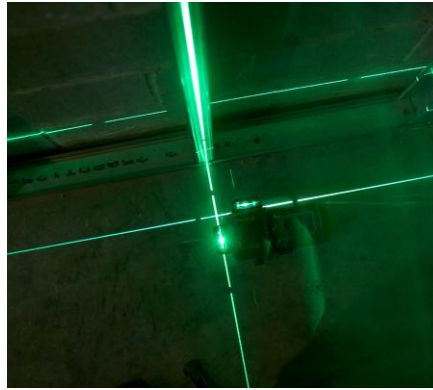


*Inspire. Educate. Unite.*



# TECHNOLOGY

- iPads at every project to keep foreman up to date on drawings and changes, Jobsite Documentation & QA/QC
- Layout Robotics – HP SitePrint – Robotic Layout Solution
- FrameCAD
- Stud Chopper
- Data Vaults
- Canvas Finishing Robot





BUSINESS UPDATES

## TECHNOLOGY

In February, we purchased five layout robots that are available to ship and use at job sites in any of our markets.

CHECK OUT  
*HP SITEPRINT*



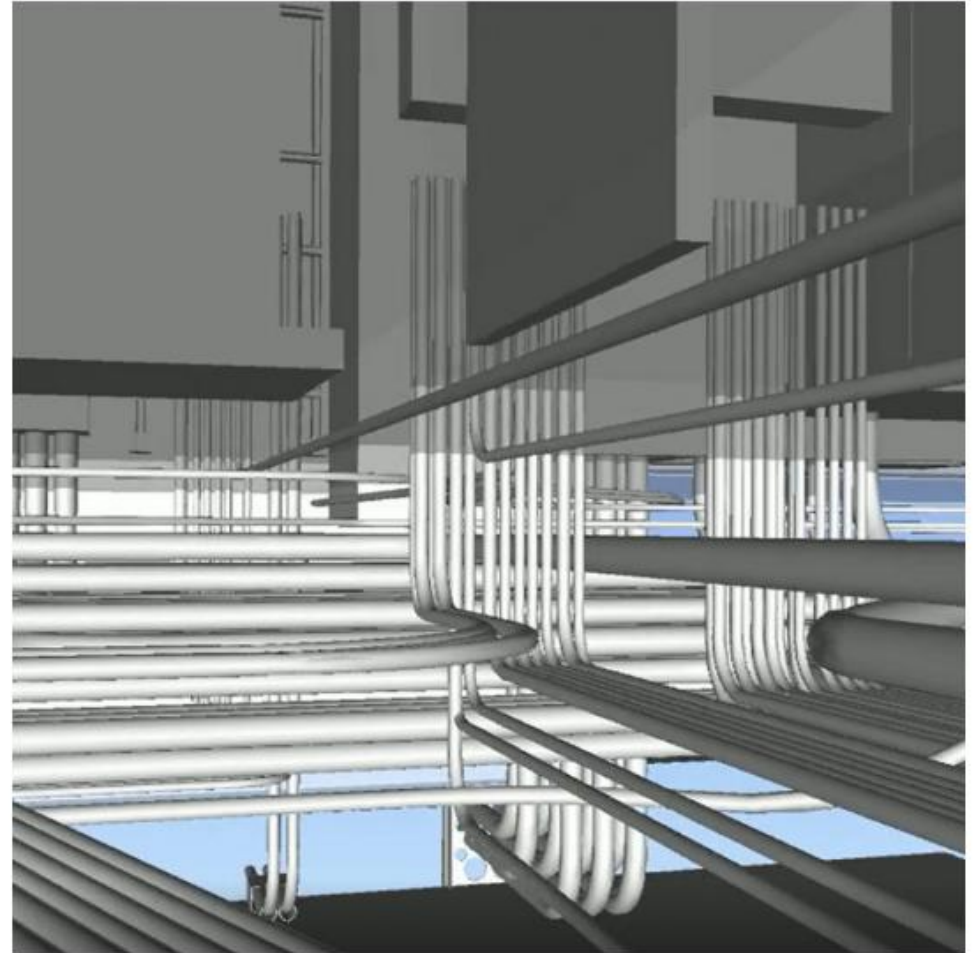






## **VIRTUAL LAYOUT CONSTRUCTION (VLC) & VIRTUAL DESIGN CONSTRUCTION (VDC)**

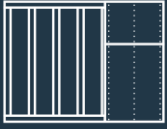
Our VLC & VDC departments are known for their attention to detail, generating a comprehensive set of VDC drawings with no gray areas or guesswork. With 11,000 square feet of in-house prefabrication space, our resources enhance project efficiency, saving you time and money up front.



*Inspire. Educate. Unite.*



# Prefabrication & Modular Construction



# PREFABRICATION

Our goal is setting clients up for builds that are leaner, cleaner, faster and safer. By strategically pulling pieces of the construction puzzle into a controlled manufacturing environment, we can deliver fully assembled systems to the job site, ready for install.

We lead the industry in cutting-edge strategy, combining construction experience with a manufacturing mindset.

- Design Assist + Value Engineering
- 62,000 sq ft Prefabrication Facility in Cincinnati
- In-house BIM capability
- FRAMECAD Machine
- Three CNC Machines
- Both custom and in-stock materials



# THE RISE OF PREFAB

Prefabrication alleviates many construction industry challenges including:

- Quality
- Labor Shortages
- Safety
- Schedule

For projects, prefab can:

- Shorten Timelines
- Optimize Constructability
- Reduce change orders
- Increase Sustainability
- Reduce site congestion
- Lower soft costs (insurance, facilities, management, etc.)



PREFABRICATION HOURS FOR  
WALLING, STRUCTURAL, AND FRAMING  
CONTRACTORS ARE EXPECTED TO  
DOUBLE IN THE COMING YEARS.





DIRTT



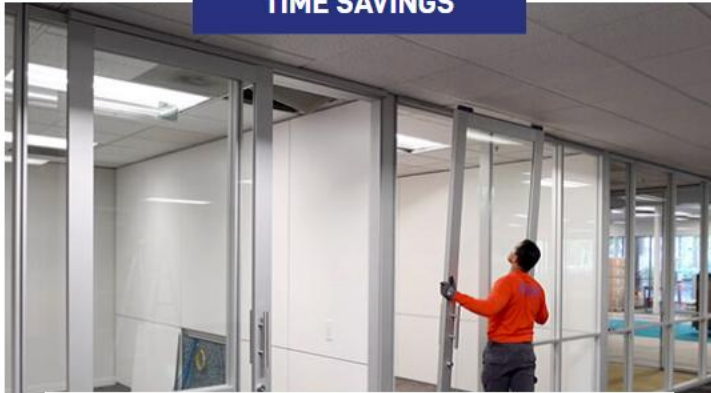
*Inspire. Educate. Unite.*





# DIRTT

## TIME SAVINGS



Regardless of size or complexity, every project is completed within a reasonable timeframe, saving time in the process. Changes in DIRTT design seamlessly integrate, maintaining project timelines and adapting to evolving client needs and preferences.

## SUSTAINABLE CONSTRUCTION



Meet your sustainability goals through reduced material waste. Off-site manufacturing in interior construction means less waste and better quality control. It also means reduced site disruption, and ensures precise assembly.

## DESIGN + COST CERTAINTY



Our ICE technology offers a comprehensive view of your design and associated costs from concept to completion. Visualize your project and receive real-time cost estimates, ensuring that the project aligns with financial goals from the outset.

*Inspire. Educate. Unite.*



# Breakout Questions

---

## If pre-fabrication is the future of construction:

What are some of things holding it back?

How do Owner's and Design keep up the ever-evolving trends / methods / technology?

How does it become an option (a tool in the toolbox) for every project?